

# Custom RealFlight Aircraft Download and Installation:

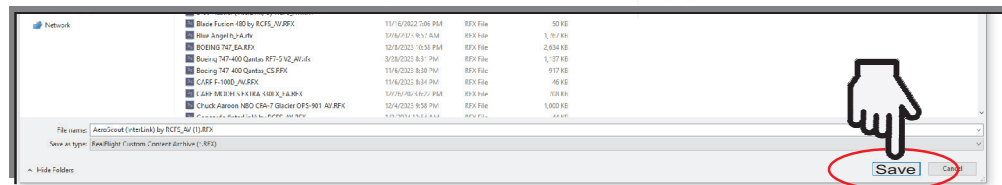
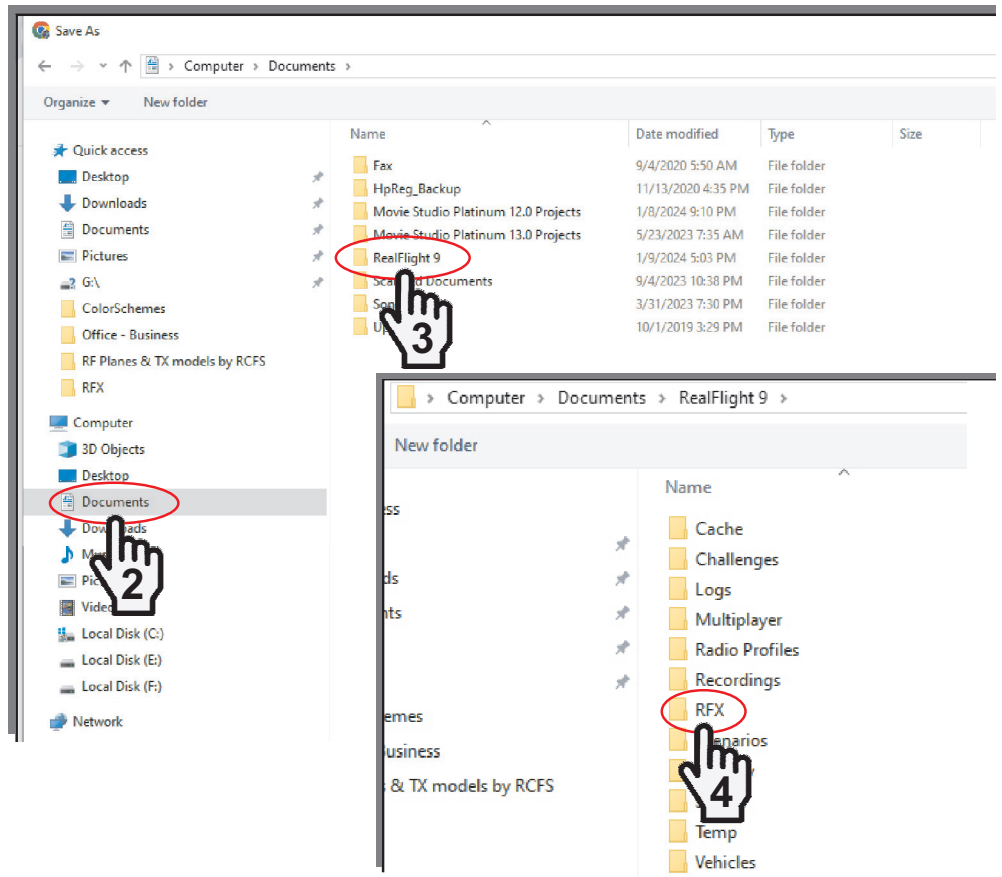
**1.** Click on the link of the aircraft that you want to download. Save File As window will open.

## Aircraft List & Links

**2.** Click on "Documents" (usually on the left margin of the window)

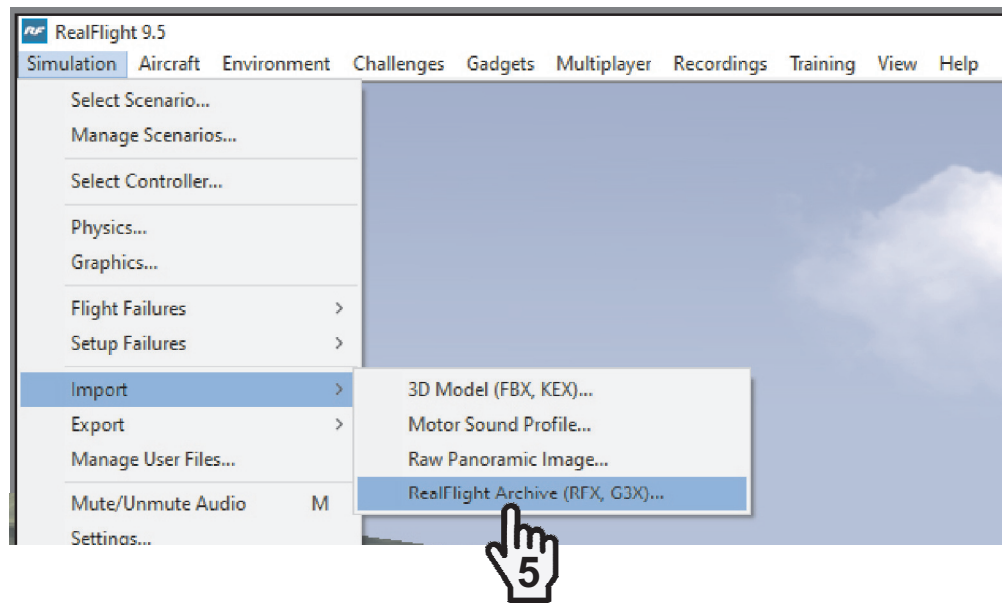
**3.** Double click on RealFlight.

**4.** Double click on the RFX folder > Then click Save.

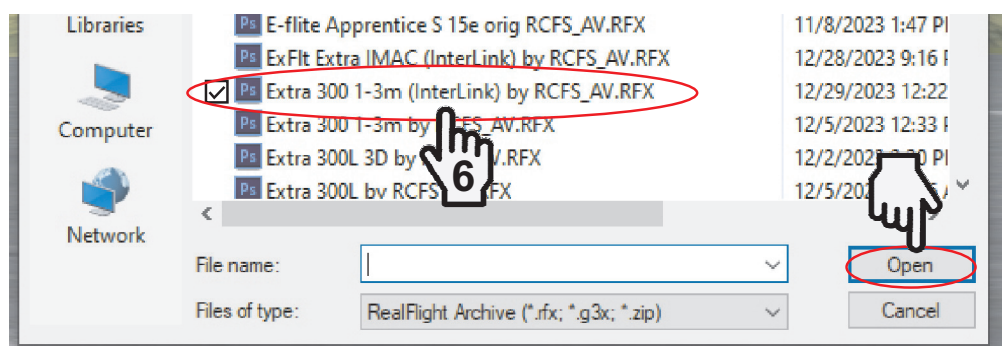


Next Import the aircraft file into RealFlight...

**5.** Start RealFlight. Click Simulation, highlight Import > click on RealFlight Archive (RFX, G3X)...



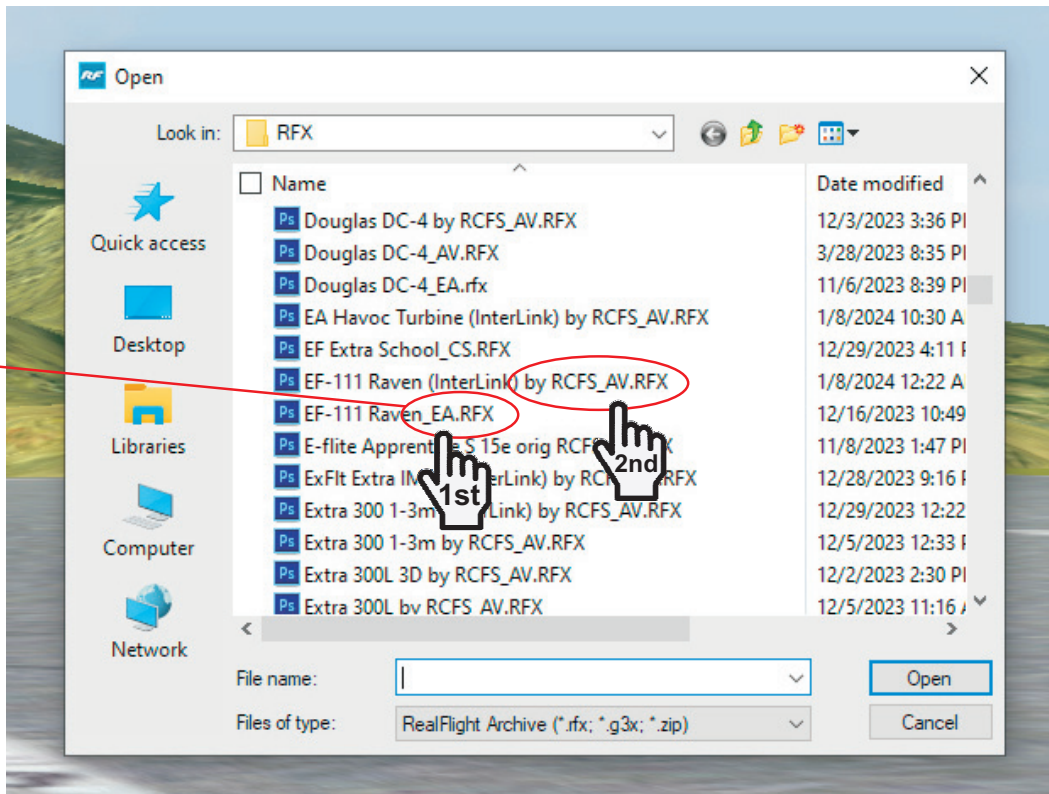
**6.** Select the plane(s) you wish to Import into RealFlight > then click Open (to Import into RealFlight).



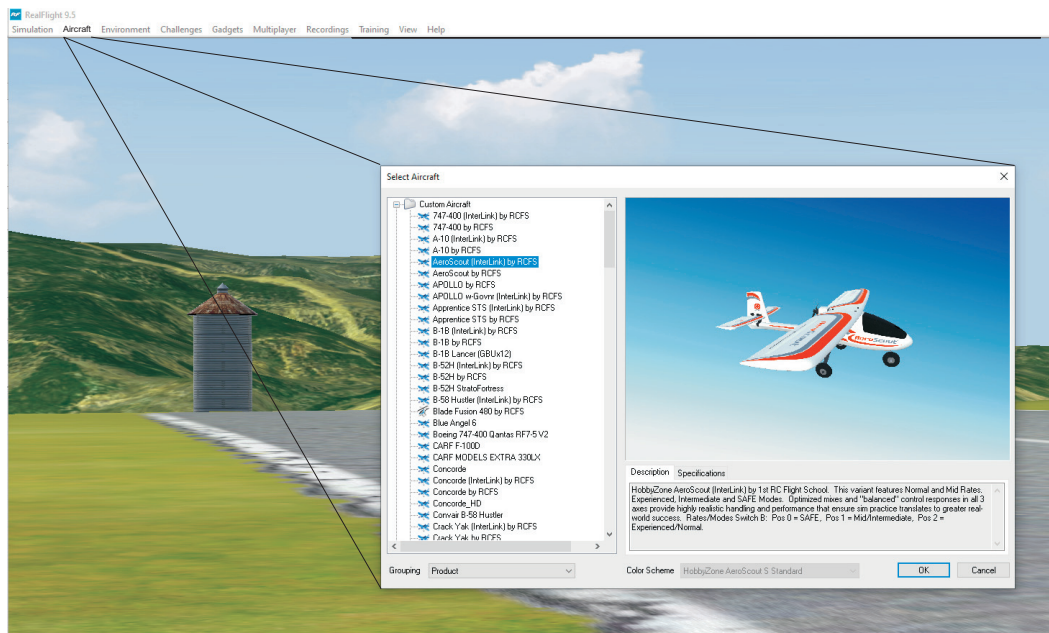
If an Import fails due to "This aircraft variant could not be loaded. It is based on an aircraft you do not have."

You'll need to Download and Import the default aircraft file ending `_EA.RFX` that the RCFS Aircraft Variant is based on.

After Importing the `_EA.RFX` Aircraft file into RealFlight, Import the Aircraft Variant ending by `RCFS_AV.RFX`



The optimized 1st RC Flight School Aircraft will be located in the Custom Aircraft folder for you to select and OK to fly.



1st RC Flight School is pleased to offer a wide selection of optimized RealFlight planes ready-to-fly with the Spektrum InterLink Controller

[Click here](#)

